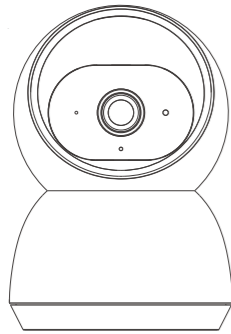


Quick Start Guide

SmartVU Home Wireless Pan/Tilt Camera

Model No: CAMVU2



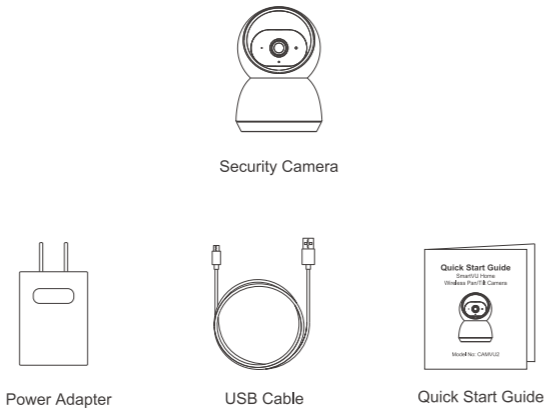
www.smartvuhome.co.nz

Please read this quick start guide carefully before using, and keep it for future reference.

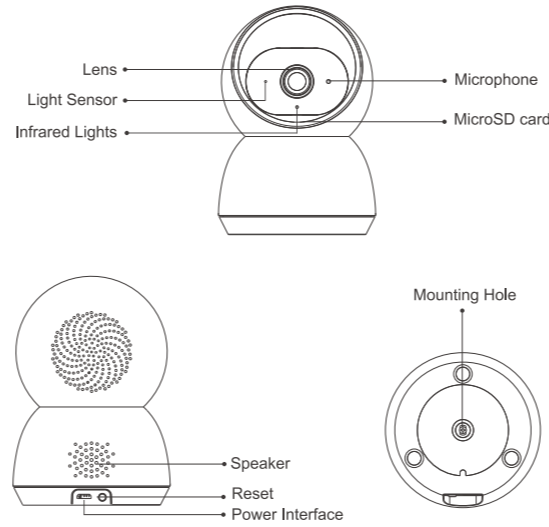
Welcome

Thank you for choosing this SmartVU Home camera. Getting started is easy.

1. What's Included

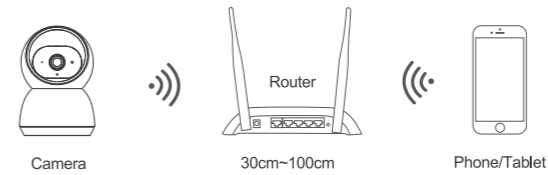


2. Product Details



3. Connection Preparation

Place the camera and your phone or tablet within 30-100 cm of the Wireless Router during setup.



Note: Make sure your phone or tablet is connected with the Wireless Router. Please note the camera will only connect to 2.4G Wi-Fi, not 5G Wi-Fi.

4. Download the SmartVU Home App

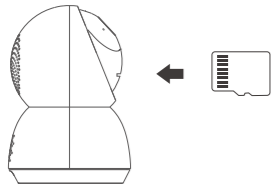
If you haven't already, download and register an account on the free SmartVU Home app. It is available on both iOS and Android, simply search "SmartVU Home" or you can scan the QR Code below.



Launch the app from your phone and select the Register button. Follow the on-screen instructions.

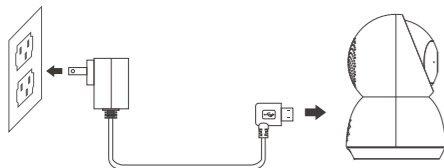
5. Insert the Micro SD card

If you wish to enable local recording, please insert an Micro SD card (up to 128GB) gently into the side edge of camera.



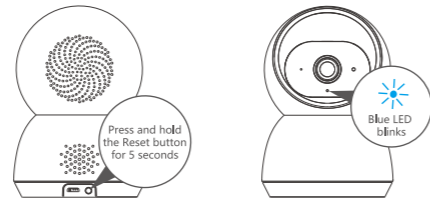
6. Connect the power to the Camera

Connect the power to the camera by Micro USB Power Adapter. (DC 5V/1A)



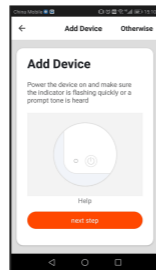
7. Set up your Camera

Press and hold the Reset button for 5 seconds, then release the button to reset the camera, the LED light will blink quickly.



In the SmartVU Home app, click "Add Device" or "+" in the top-right corner to Add Device.

Then select "Security & Sensors", and select "Smart Camera".



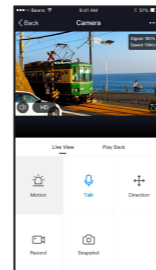
8. Set up your Camera

Follow the app's instructions and input the right Wi-Fi password.

Hold the QR Code that appears on your phone or tablet approx. 15-20 cm from the SmartVU Home camera lens.

Click "HEARD THE BEEP" when you hear the audible beep from the camera.

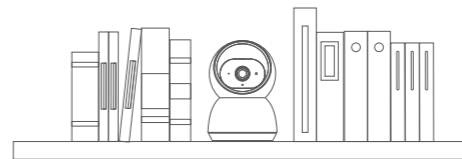
Your SmartVU Home camera has now paired successfully.



9. Positioning your Camera

You can place your camera on a shelf or other flat surface.

It is designed to be discreet, so you can slip it between some books on a shelf or beside a larger item.



You're done!

Congratulations! Your camera is set up and ready to go.



Appendix: Camera LED Guide

	LED Status	Camera Status
1	Red LED on	System starting up
2	Red LED blinks quickly	Standby for configuration
3	Blue LED blinks quickly	Network pairing
4	Blue LED on	Camera online
5	Red LED blinks slowly	OTA upgrade

smartvuhome

© 2020 Dish TV Technologies Ltd. SmartVU Home is a trademark of Dish TV Technologies Ltd.

Google and Google Play are trademarks of Google LLC. Apple® and the App Store® are trademarks of Apple Inc. Amazon, Alexa and all related logos are trademarks of Amazon.com, Inc. or its affiliates.

This Wireless Camera requires use of the included Power Adapter to function, it is unable to use Batteries.

Recording Video to Cloud Storage requires use of a subscription service, available through the SmartVU Home app, as provided by an external supplier. Subscription is not provided with the purchase of this SmartVU Home Wireless Camera.

30 day "free trial" available. See our Website for more details.